

# JOSKIN

## JUMBOMIXER

[www.joskin.com](http://www.joskin.com)



### **SLURRY MIXER AND CHOPPER**

**Screw in 6 mm stainless  
steel (Ø 650 mm)**

**Self-cleaning by counter-  
blade in stainless steel**

**Shaft submerged  
in oil bath**

**Total  
length: 7 m**

# JOSKIN

**Strength of Experience**

# JOSKIN

The fully galvanized **JOSKIN** Jumbomixer slurry mixer and chopper is standard fitted with a high-capacity propelling screw (Ø 650 mm) in reinforced 6 mm stainless steel (INOX®). The stainless steel offers higher resistance to acidity and friction than standard steel.

The screw is specially designed to mix large volumes of slurry while serving as chopper too. Its concept also includes a built-in counterblade in stainless steel to clean completely the blades. A screw protection foot is delivered as standard equipment.



The screw is fed by a Ø 115 mm transmission shaft wrapped by a thick pipe. This shaft is supported by 5 points (bearings, bronze bearing housings, bronze bushings, etc.) and completely submerged in oil bath. This main specification prevents the system from wearing prematurely and overheating. The Jumbomixer therefore benefits from an outstanding protection and a longer life span.

A triangular structure, which is made up of two side tubes and an upper one, makes the machine highly stable. Furthermore, the intersection point of the tubes prevents the transmission shaft from bending.



The screw bearings are moreover integrated into a "complete kit". This one-piece kit stands between the screw and the transmission shaft. In this way, should the bearings ever wear, this kit is easy to replace and makes it useless to replace the whole transmission shaft.

A double-acting cylinder adjusts the tilting angle (max. 45°) of the mixer. The maximum screw rotation speed is 1000 rpm for short working times. On the contrary, in the event of longer working times, this speed must be kept between 540 and 800 rpm.



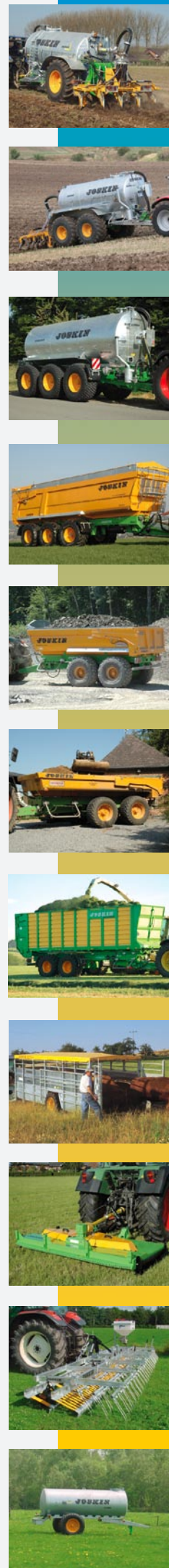
The Jumbomixer is standard fitted with a reinforced P.T.O.-shaft in star-shaped tube with 1 3/4" shaft and shear bolt. A power of 100 HP minimum is required. The total length is 7 m and the weight 450 kg.

The Jumbomixer is primarily used for lagoons over 1.000 m<sup>3</sup>.

rue de Wergifosse, 39  
4630 Soumagne - BELGIUM  
E40 Exit 37 Herve - Soumagne

Tel.: +32 (0) 43 77 35 45  
Fax: +32 (0) 43 77 10 15  
E-mail: info@joskin.com

Your local **JOSKIN** partner



www-joskin-com